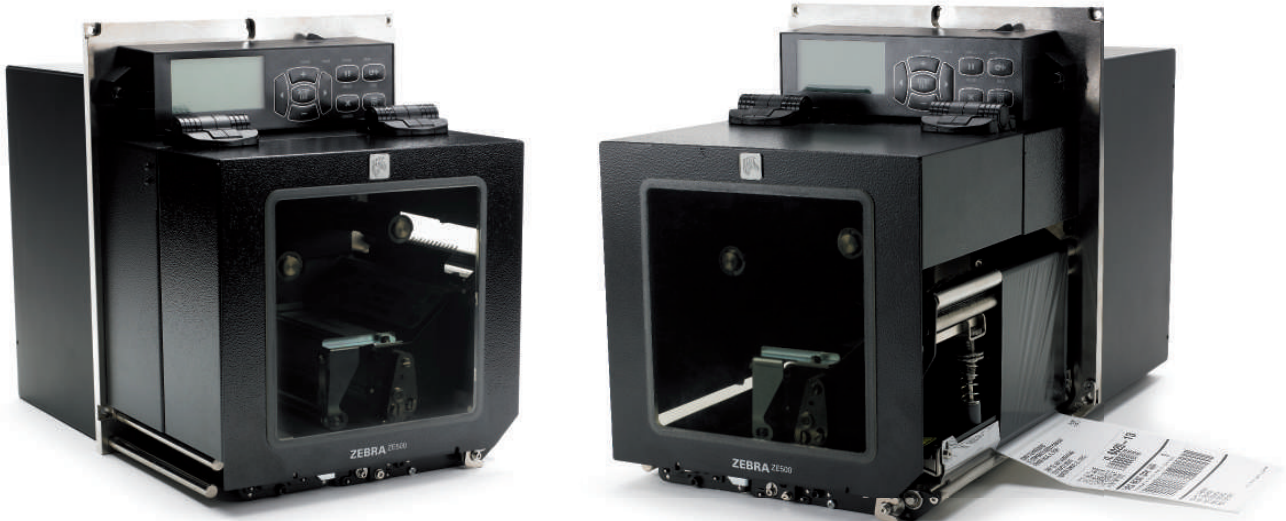




Zebra® ZE500™ Series Print Engine



SEE MORE. DO MORE.



Innovative design, greater benefits

The new ZE500 Series takes an innovative approach to OEM print engines. Leveraging extensive customer research, the design focuses on ease of use, integration and servicing. Built with the customer in mind, the ZE500 Print Engine is designed to keep mission-critical print-and-apply applications operating without interruptions.

The elegant design of the ZE500 simplifies maintenance and dramatically reduces downtime. All three rollers can be exchanged in minutes, with no need to access the printer's electronics. The wide open printhead makes cleaning and replacement simple, and the

quick-change modular drive system reduces printer repair time. Expanded RFID features deliver greater tracking capabilities for improved operational efficiency.

Routine operations such as ribbon changing are simple and straightforward (and identical for both print widths). The new graphic display can be detached and rotated, enabling flexible positioning for improved ease of use and integration.

The user experience is much improved: the design enables easy integration with print-and-apply machinery plus has better resistance to dust and water. Expanded connectivity ports and enhanced software control of the applicator port provides further integration flexibility.

Ideal for print-and-apply labelling applications for products, cartons, cases and pallets in:

- **Manufacturing and warehousing**
- **Automotive**
- **Pharmaceuticals**
- **Food and beverage**
- **Health and beauty**

Get the most out of your Zebra printer: put genuine Zebra supplies in!

Zebra offers a wide range of supplies for ZE500 Series Print Engines, all made to a high standard and suitable for a variety of applications.

- Manufactured exclusively for Zebra printers
- Laboratory-tested for optimum performance
- Proven to minimise wear and tear on printheads

For more information, visit www.zebra.com



SPECIFICATIONS AT A GLANCE*

ZEBRA ZE500 SERIES PRINT ENGINE

Standard features

- Print methods: thermal-transfer or direct-thermal
- Orientation: right-hand or left-hand
- Industrial all-metal construction
- 16MB SDRAM, 64MB flash memory
- Applicator interface
- Transmissive and reflective media sensors
- Multi-level Element Energy Equalizer™ (E³™) for superior print quality
- Real-time clock
- Rotatable display
- ZPL II™ – universal language for Zebra printers

Printer specifications

ZE500-4™:

- Maximum print width: 104mm (4.1")

Media specification

- Label and liner width: 16mm (0.625") to 114mm (4.5")
- Minimum length with back feed: 13mm (0.5")
- Minimum length without back feed: 6.5mm (0.25")
- Minimum length in stream mode: 6.5mm (0.25")
- Maximum length: 990mm (39")
- Maximum continuous media print length: 3,810mm (150")
- Ribbon width: 25.4mm (1") to 107mm (4.2")

Resolution

- 8 dots/mm (203dpi) or 12 dots/mm (300dpi)

Maximum print speed

- 305mm (12") per second (203 and 300 dpi)

ZE500-6™:

- Maximum print width: 168mm (6.6")

Media specification

- Label and liner width: 76mm (3") to 180mm (7.1")
- Minimum length with back feed: 76mm (3")
- Minimum length without back feed: 25.4mm (1")
- Minimum length in stream mode: 25.4mm (1")
- Maximum length: 990mm (39")
- Maximum continuous media print length: 3,810mm (150")
- Ribbon width: 76mm (3") to 180mm (7.1")

Resolution

- 8 dots/mm (203dpi) or 12 dots/mm (300dpi)

Maximum print speed

- 305mm (12") per second (203dpi)
- 254mm (10") per second (300dpi)

RFID (ZE500-4 Only):

- Supports tags compatible with UHF EPC Gen 2 V1.2/ISO 18000-6C
- Prints and encodes short pitch item level tags
- Variable RFID power settings to support the widest range of tags
- RFID job monitoring tools track RFID performance

- RFID ZPL® commands provide compatibility with existing Zebra RFID printers
- Support for industry standard multi-vendor chip-based serialization (MCS)
- Supports block permalocking of user memory compatible with ATA Spec 2000
- Integrated ThingMagic® RFID Reader/Encoder

Media characteristics

Labels

Media thickness (label and liner)

- ZE500-4: 0.135mm (0.0053") to 0.254mm (0.010")
- ZE500-6: 0.076mm (0.003") to 0.305mm (0.012")

Media types

- Continuous, die-cut or black mark

Ribbons

Max. roll size

- 101.6mm (4") O.D. on a 25.4mm (1") I.D. core

Standard length

- 600m capacity

Operating characteristics

Environment

- Operating temp.: 0°C (31°F) to 40°C (104°F)
- Storage temp.: -40°C (-40°F) to 71°C (160°F)
- Operating humidity: 20% to 95% non-condensing R.H.
- Storage humidity: 5% to 95% non-condensing R.H.

Electrical

- Universal power supply with power-factor correction 90–264 VAC, 47–63Hz

Connectivity

- Parallel port: Centronics®-compatible
- Serial interface: RS-232
- USB 2.0
- Internal ZebraNet™ 10/100
- Applicator interface with DB-15F connector
- Optional ZebraNet b/g Print Server

Agency Approvals

- VCCI, CCC
 - Standards approvals: IEC 60950-1; EN 55022, Class A; EN 55024; EN 61000-3-2, 3-3
 - Product markings: NRTL; CE; FCC A; ICES-003; VCCI; C-Tick; CCC; NOM; Gost-R; S-Mark; KCC; BSMI

Physical characteristics

ZE500-4:

- Width: 245mm (9.6")
- Depth: 379mm (14.9")
- Height: 300mm (11.8")
- Weight: 15.4kg (34lb)

ZE500-6:

- Width: 245mm (9.6")
- Depth: 438mm (17.2")
- Height: 300mm (11.8")
- Weight: 17.3kg (38lb)

Fonts/Graphics/Symbologies

Fonts and character sets

- Zebra Global printing solution including Unicode™
- Swiss 721 font standard
- Bitmap fonts A to H and GS symbols are expandable up to 10 times, height- and width-independent
- Smooth-scalable font Ø (CG Triumvirate™ Bold Condensed) is expandable dot-by-dot, height- and width-independent
- IBM® Code Page 850 International Characters
- Contains UFST® from Agfa Monotype Corporation
- Firmware support for downloadable TrueType™ fonts
- Additional fonts available

Graphics features

- Supports user-defined fonts and graphics, including custom logos

Barcode symbologies

- All standard linear and 2D barcodes supported

ZebraLink™ Solutions

Software

- ZebraDesigner™ Pro
- ZebraNet Bridge Enterprise
- ZBI 2.0™ ZBI-Developer™

Firmware

- ZPL II
- Web View
- Alert
- ZBI 2.0

*Specifications subject to change without notice.

©2014 ZIH Corp. Element Energy Equalizer, E³, ZBI 2.0, ZBI-Developer, Zebra, representation of Zebra Head, ZebraDesigner, ZebraLink, ZebraNet, ZPL II and all product names and numbers are Zebra trademarks, and may be registered trademarks of ZIH Corp in certain jurisdictions. All rights reserved. Unicode is a trademark of Unicode, Inc. CG Triumvirate and UFST are trademarks of Monotype Imaging, Inc. and may be registered in certain jurisdictions. TrueType is a trademark of Apple Inc. IBM is a registered trademark of International Business Machines Corporation in the United States, other countries, or both. Centronics is a registered trademark of Centronics Data Computer Corporation. All other trademarks are the property of their respective owners.



Zebra Technologies – EMEA Headquarters & Sales Office

Zebra Technologies Europe Limited, Dukes Meadow, Millboard Road, Bourne End, Buckinghamshire, SL8 5XF, United Kingdom
Telephone: +44 (0)1628 556000 Fax: +44 (0)1628 556001 Email: mseurope@zebra.com Web: www.zebra.com

Other EMEA Locations

Europe: France, Germany, Italy, the Netherlands, Poland, Russia, Spain, Sweden, Turkey

Middle East & Africa: Dubai, South Africa

SEE MORE.
DO MORE.

www.zebra.com

Please recycle after use

12628L (05/14)